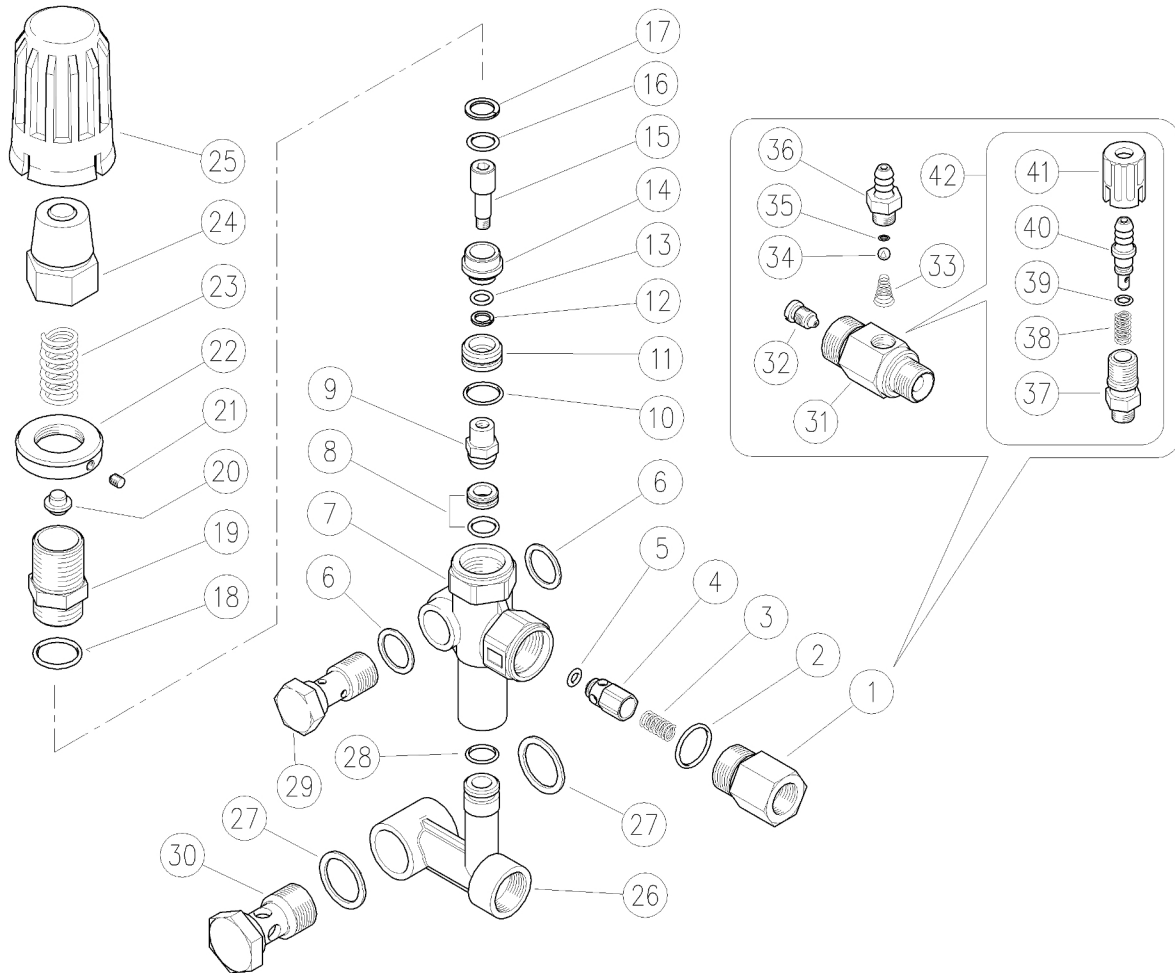



60.1350.10 VB56 Umlaufvent. X:19 Y:62-73 G3/8IG



Pos.	Bestell-Nr.	Beschreibung	Meng	K1	K2	K3	K4	Pos.	Bestell-Nr.	Beschreibung	Meng	K1	K2	K3	K4
1	60.0058.31R	Druckanschl., G3/8IG Mess.	1				5	24	60.1304.31R	Ventil-verstell. Einsatz, Mess.	1				5
1	60.0103.31R	Druckanschl., G3/8AG Mess.	1				5	25	60.1202.84R	Ventil-verstell. Knopf, PA schwarz	1				5
1	60.0103.31R	Druckanschl., G3/8AG Mess.	1				5	26	60.1352.35R	Verteiler, G1/2IG Mess. (x19/y61-73)	1				3
2	10.3070.02R	O-Ring, 1,78x18,77 mm Ni 85	1	•			10	26	60.1373.35R	Verteiler, 2xG1/2 IG Mess. (x26/y66-76)	1				3
3	60.0053.51R	Feder, 0,7x9x20 mm Ed/st.	1				10	26	60.1354.35R	Verteiler, G1/2IG Mess. (x4,5/y53,5)	1				3
4	60.0052.99R	Verschlussstift, Mess.+or 3x6 mm	1				10	26	60.1354.35R	Verteiler, G1/2IG Mess. (x4,5/y53,5)	1				3
5	10.3213.00R	O-Ring, 3x6 mm	1	•			10	27	14.4101.00R	Dichtungsscheibe, G1/2	2				10
6	14.4100.00R	Dichtungsscheibe, G3/8	2				10	27	14.4101.00R	Dichtungsscheibe, G1/2	1				10
7	60.1351.35R	Ventilgehäuse -VB55, Mess.	1				5	27	14.4046.00R	Dichtscheibe, 17x30x1,5 mm Cu	1				10
7	60.1355.35R	Kompakt-Gehäuse -VB55, Mess.	1				5	28	10.3175.10R	O-Ring, 2,62x10,77 mm Vi 70	1				10
8	60.1306.20R	Sitz, 8mm+O-Ring 1,78mm NBR85	1	•			10	29	60.1007.31R	Gelocht.Schraube, G3/8AG 41,5mm Mess.	1				10
9	60.1311.21R	Verschlussstift, M6 Mss+Kugel, 13/32"Ed/st	1	•			10	30	60.1008.31R	Gelocht.Schraube, G1/2AG 41,5mm Mess.	1				10
10	10.3064.01R	O-Ring, 1,78x14 mm Ni 85	1	•			10	30	60.1366.31R	Gelocht.Schr.G3/8Ag-1/2"x41,5mm Mss.	1				10
11	60.1318.31R	Abstandring, d.18 mm Mess.	1				10	31	21.0261.31R	Injekt.Gehä.M22x1,5 AG-G3/8 AG **	1				3
12	10.4007.00R	Stützring, offn. 7x10x1,2 mm	1	•			10	32	21.0213.51R	Düse, M8x1 - 2,1 mm Ed/st. ***	1				10
13	10.3052.02R	O-Ring, 1,78x6,75 mm Ni 90	1	•			10	33	21.0160.51R	Kegelfeder, Ed/st. -Injekt.	1				10
14	60.1317.31R	Abstandring, 18,5 mm Mess.	1				10	34	14.7420.01R	Kugel, 7/32" Ed/st. Aisi 316	1				10
15	60.1307.51R	Kolben, M6 Ed/st.	1				10	35	10.3049.00R	O-Ring, 1,78x5,28 mm Vi 70	1				10
16	10.3175.08R	O-Ring, 2,62x10,77 mm Ni 85	1	•			10	36	21.0003.31R	Schlauchtülle, 8 - M12x1 mm Mess.	1				10
17	10.4017.00R	Stützring, offn. 15,5x10,9x1,2 mm	1	•			25	37	21.0173.31R	Anschl., M12x1-G1/4AG Mess.	1				10
18	10.3068.01R	O-Ring, 1,78x17,17 mm Ni 85	1	•			10	38	21.0158.51R	Feder, 0,8x7x15 mm Ed/st.	1				10
19	60.1314.31R	Kolbenhalter, Mess.VB56	1				10	39	10.3043.01R	O-Ring, 1,78x4,48 mm Vi 70	1				10
20	60.1313.31R	Federführungsstift	1				10	40	21.0155.99R	Schlauchtülle, d.8 mm Mess.+o-ring	1				5
21	16.2100.00R	Gewindestift, DIN914 M4x4 mm	1				10	41	21.0171.84R	Injekt.Knopf, G1/4IG schwarz	1				10
22	60.1312.31R	Ringmutter, M20x1 Mess.	1				10	42	21.0100.00R	Reg.+Tülle 8-M12mm Mes.Injek.	1				50
23	60.1315.61R	Feder, 3,4x13,8x48 mm vzinkt.	1				10								

** Auf Anfrage

*** Verschiedene Größen verfügbar

Kit	Bestell-Nr.	Beschreibung	
K1	60.1321.24	Ersatz-Kit -VB5-II°-VB56, 10x1Stk.	1